



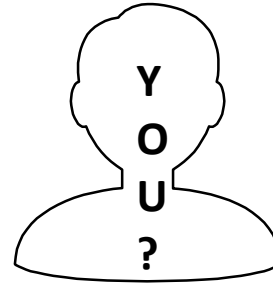
# **Production Monitoring System**

Introduction  
&  
Technology Overview

# Do you get these thoughts?

I need to improve machine operational efficiency and be able to budget for each stroke or operation

I know that my machine runs 90% of the time; but suspect that the actual work performed by machine is less



It takes me at least 15 minutes to know when a machine has failed thus resulting in productivity loss

I want to install additional sensors, analyze data and provide timely notification messages to respective stake holders

- Leading Industrial IoT Platform for Manufacturing Industry
- Help Customers to Increase Machine Up-Time
- Provide Real-Time Manufacturing Analytics and Insights

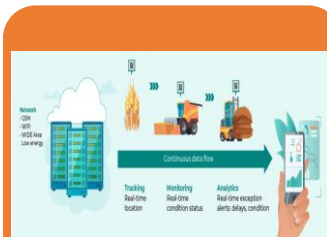
# S2R2 Suite



Production  
Monitoring



Condition  
Monitoring



Manufacturing  
& Assembly  
Traceability



Remote  
Health  
Monitoring



Customized  
Industrial IoT  
Solutions

650+  
Machines

50+  
Customers

10  
Million  
Records per  
day

- Productized Industrial IoT Software Platform for Monitoring All Kinds of Machines
- Uses Edge Computing Devices, Data Lake and Analytical engine
- Optimize Machine Operations
- IoTize Legacy Manufacturing Machines (Acquire Production Data)
- Plug and Play Installation to Monitor OEE
- Automatic Down Time Monitoring

**Connect**

**Analyze**

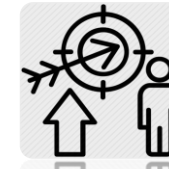
**Act**



Real-time production visibility on the shop floor



Identify and act on the causes of downtime



Performance evaluation of machine



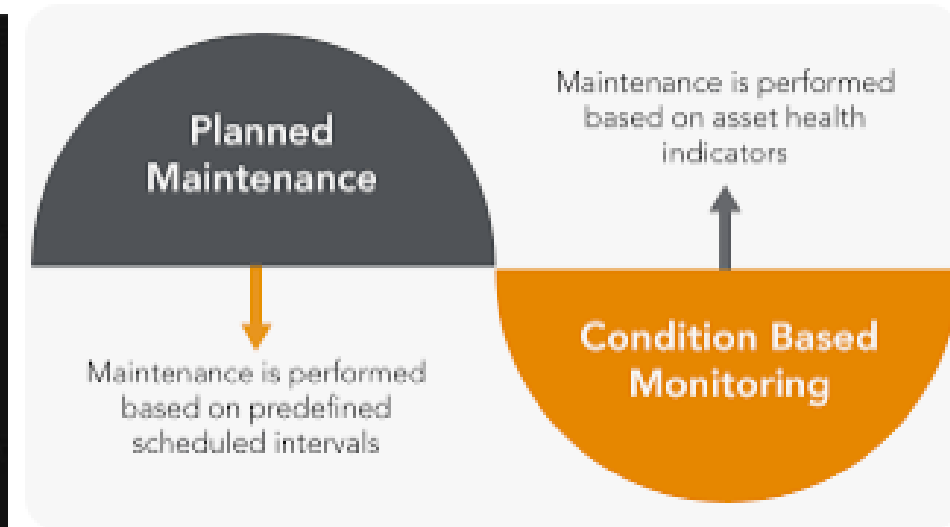
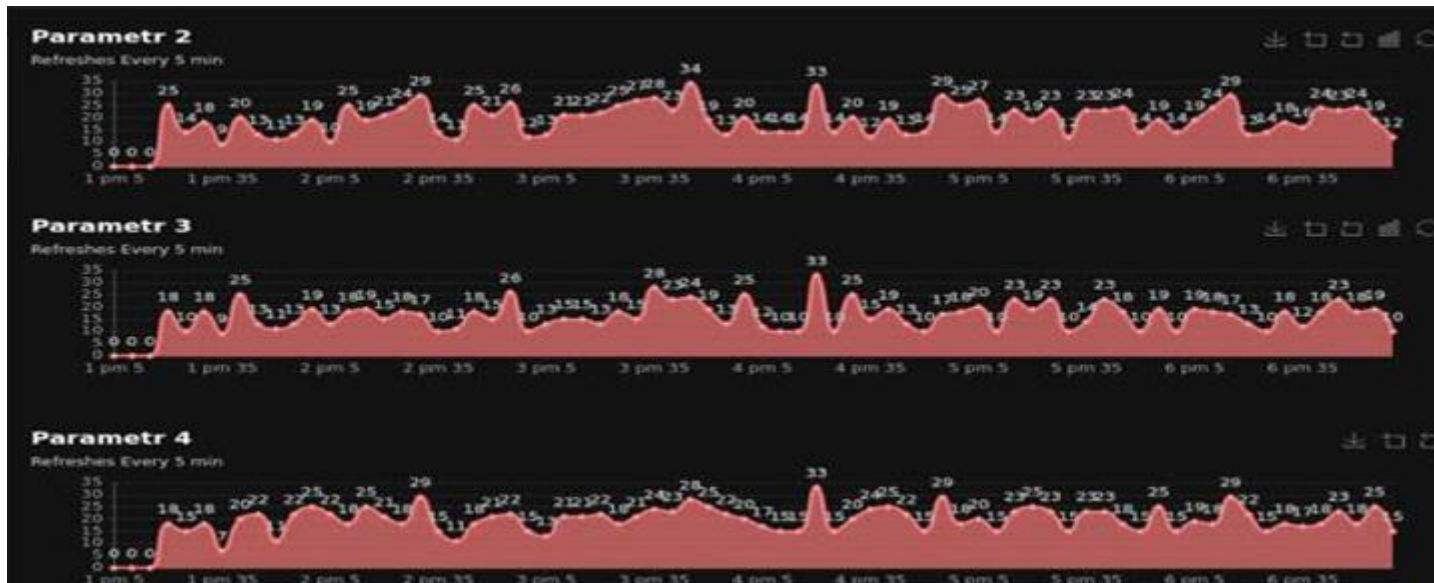
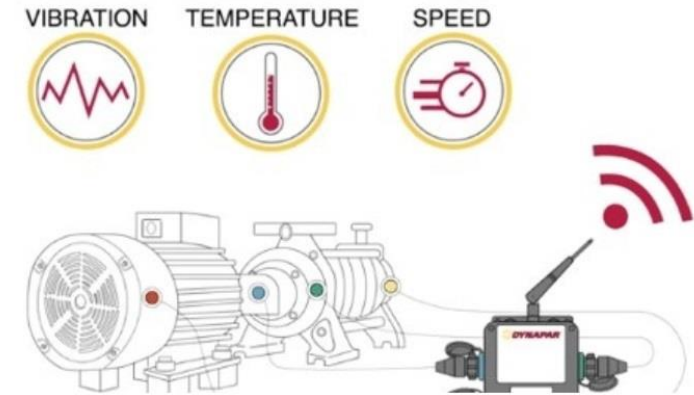
Identify process improvements at various levels

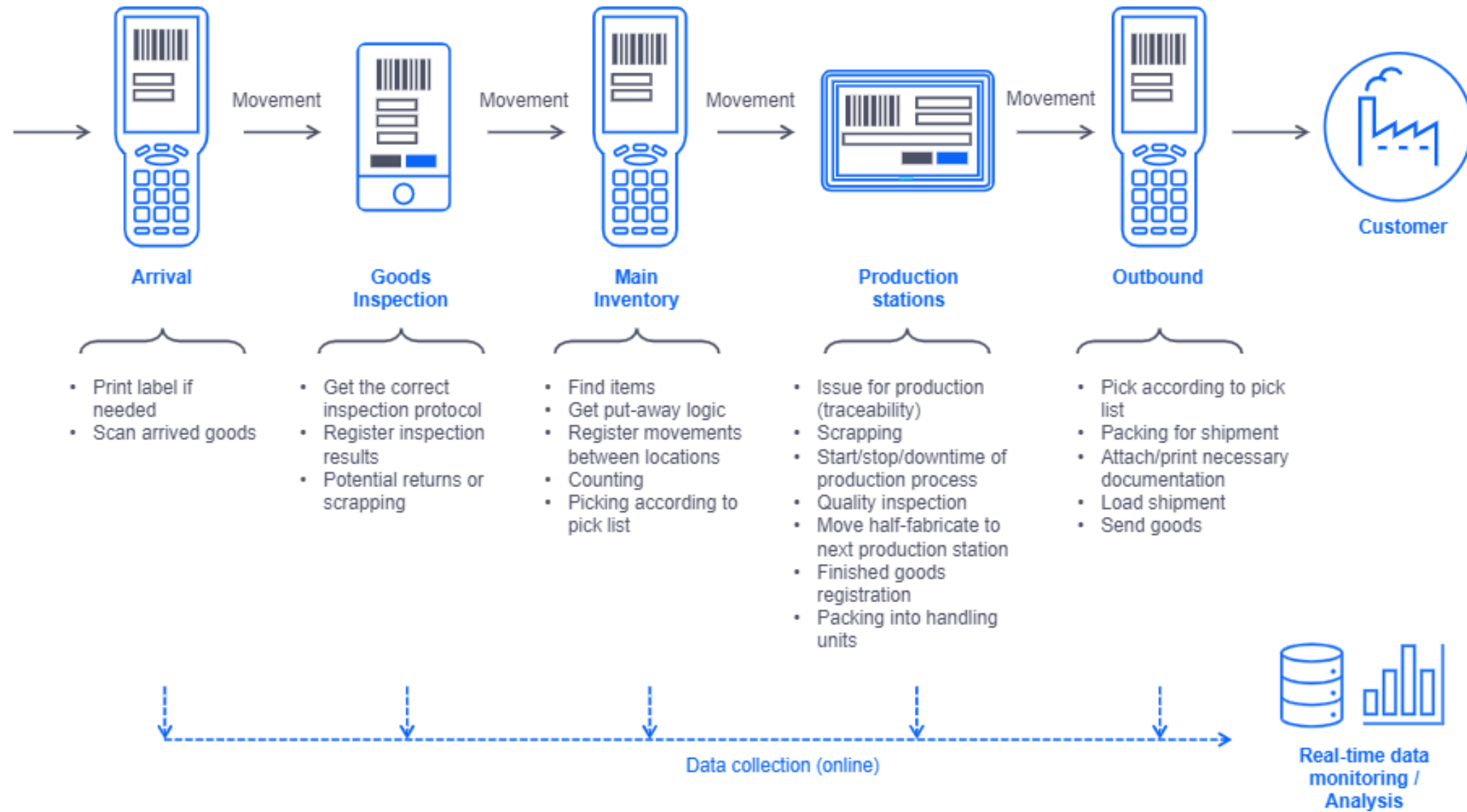


Seamless integration with external systems like ERP

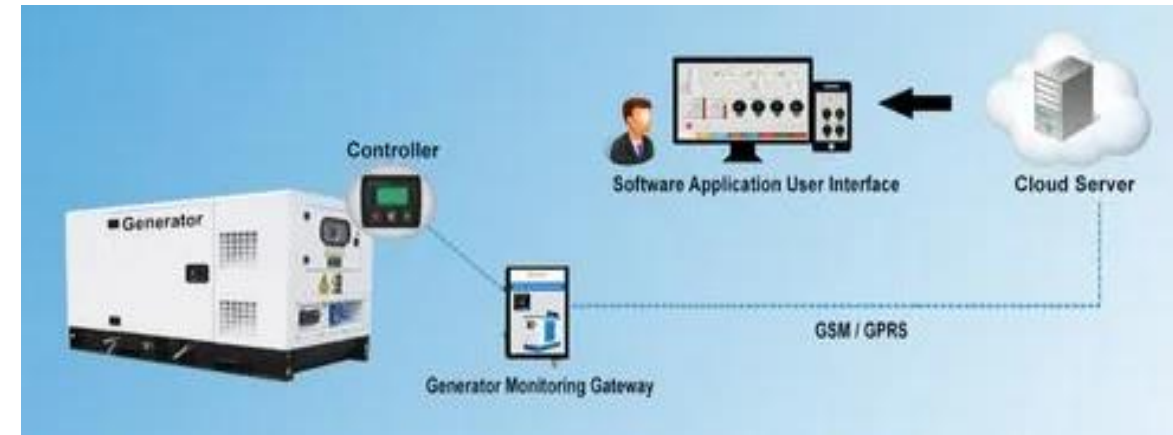
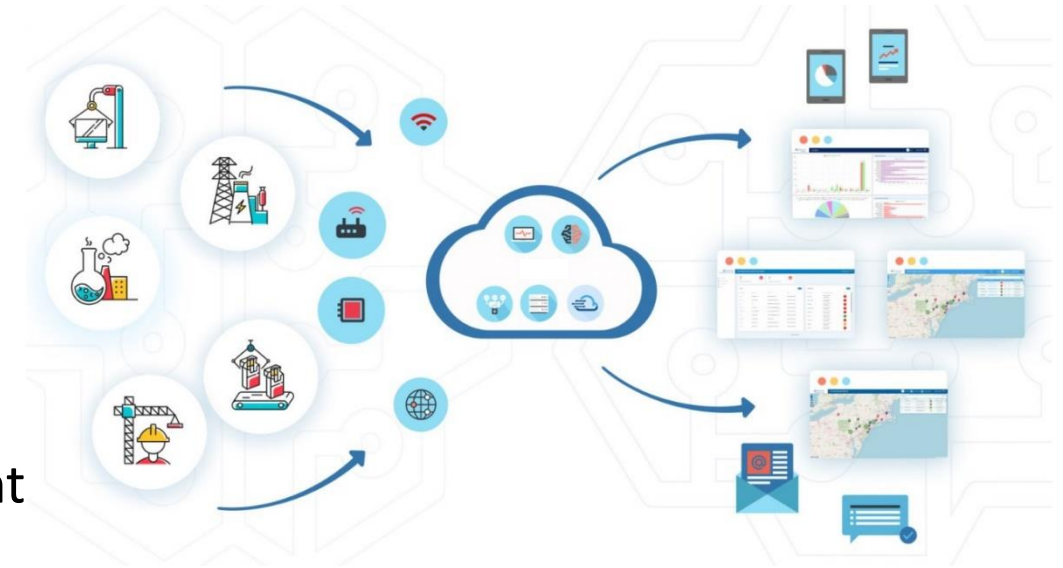
- Ready to use IOT Application platform for Condition Based Monitoring (CBM)
- Any Parameters or conditions like Temperature, Pressure, Vibration, Acoustic Noise, Humidity etc. can be monitored (with the help of sensors)
- Sample dashboard for temperature monitoring

## Condition Monitoring System





- Enable Tele-management of your equipment to:
  - ✓ Manage it remotely
  - ✓ Supervise its operations
  - ✓ Receive immediate alerts for incidents
  - ✓ Compare performance between different equipment
  - ✓ Improve your efficiency and the competitiveness
- Enhance Up Time and Productivity of Equipment
- Bring down Warranty Costs
- Plan Service and Support Calls

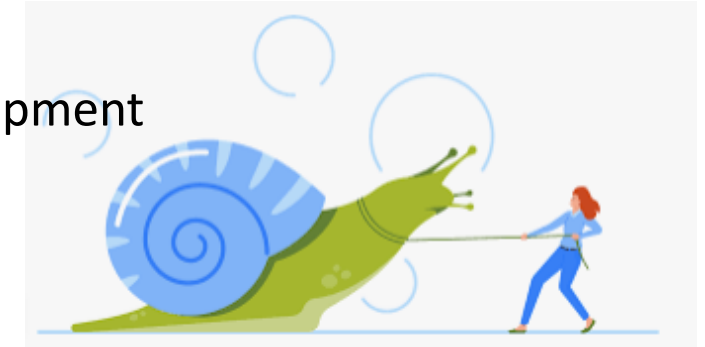




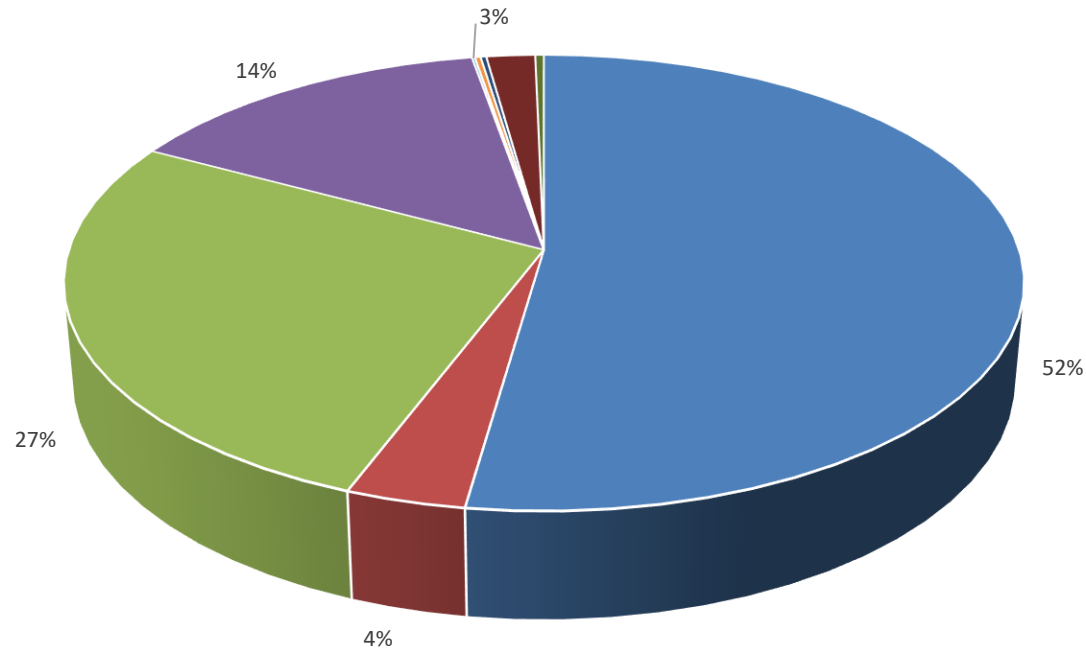
- Legacy Equipment is a Big Road Block for the Digital Transformation
- S2R2's Hardware Device (lotizer) can Acquire Data from any Legacy Equipment



- Industry grade standard chipset
- Digital and/or Analog Inputs/Outputs
- Wireless Communication
- Protocol: MQTT
- Easy to Configure and Maintain
- Web and Mobile App for Wireless Configuration
- Data Security: TLS 1.2 supported
- FOTA







- Metal cutting
- Remote health monitoring
- Pharma
- Injection Moulding
- Metal forming
- Motors
- Printing machines
- Process industry



KALYANI TECHNOFORGE



RENISHAW  
apply innovation™

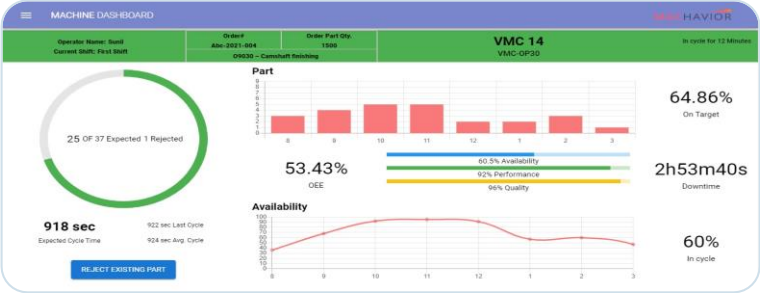
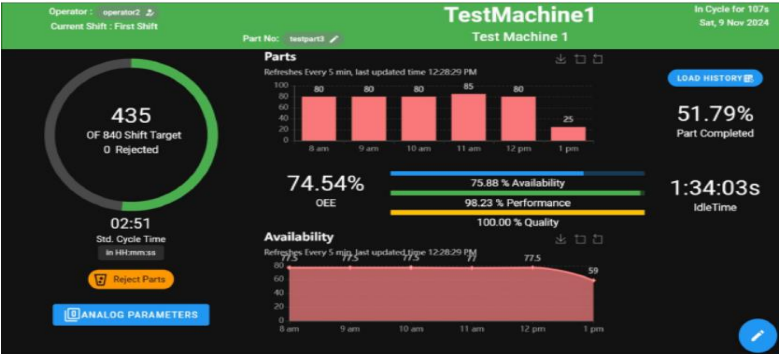
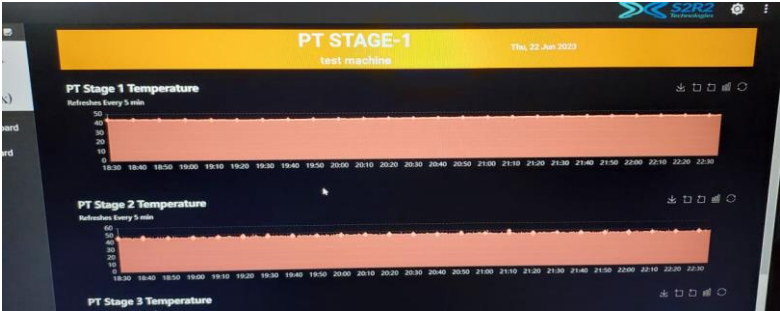


Saroj Group of Companies



EagleBurgmann entrib









Sandeep Mutalik

- MBA from Symbiosis, Pune in Computer Systems. 27+ years of experience in Software Product Development, hands-on experience while working with PCS, i2 Technologies, BMC Software, Avaya, IBM
- Worked extensively at customer sights at USA, Germany, South Africa and India
- Sound Domain Knowledge of Machining Centers, Metrology, Data Acquisition and Processing



Rajiv Mandke

- B Tech Mechanical Engineering from IIT Bombay
- 45+ years of Global experience in Management, Strategy development and Business functions
- Ex Principal Consultant at Kaizen Inst. Japan, Executive Director at ACMA, Tata Motors, Schlumberger
- Expertise in driving Automotive and market expansion plans



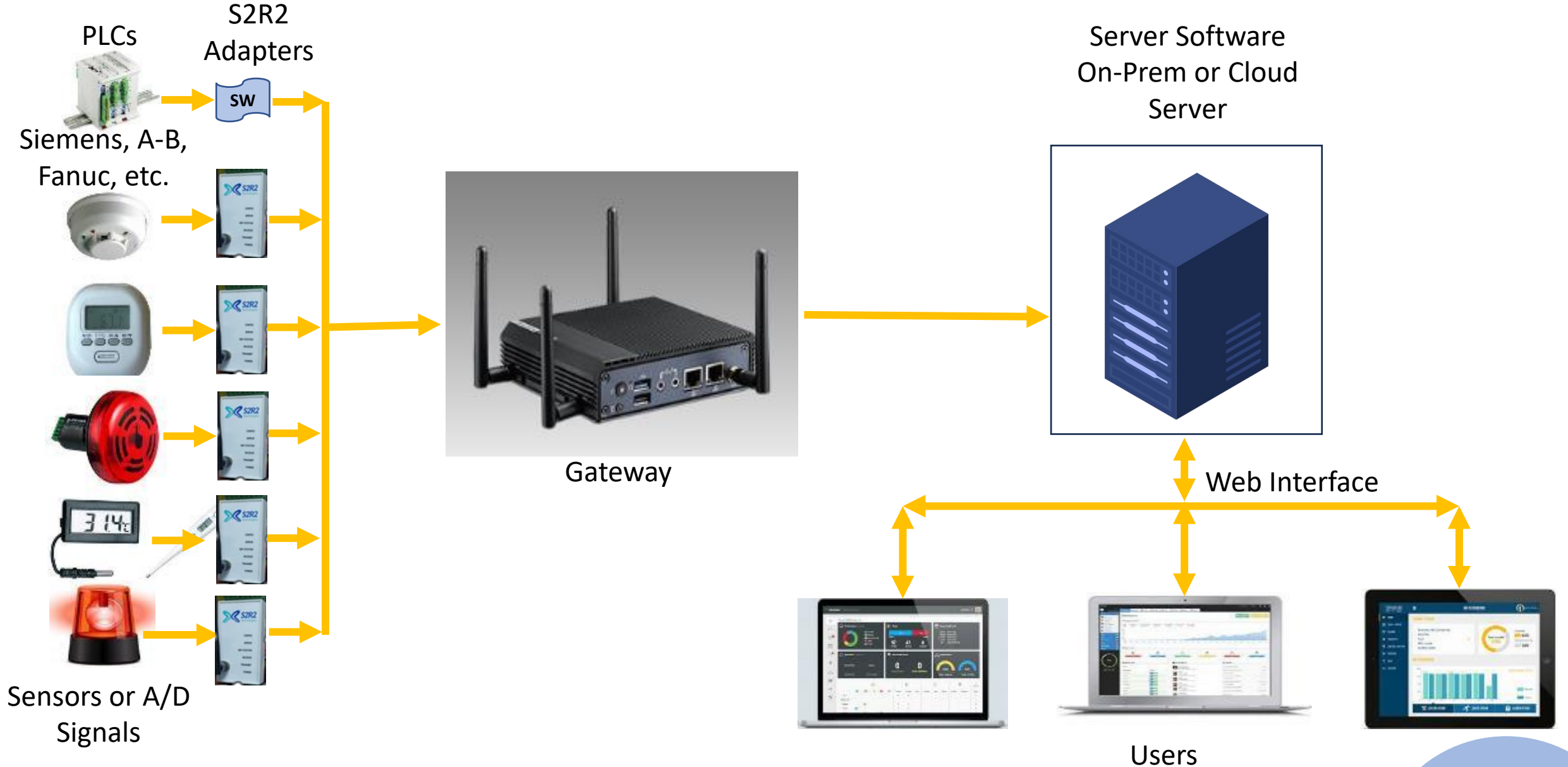
Santosh Mutalik

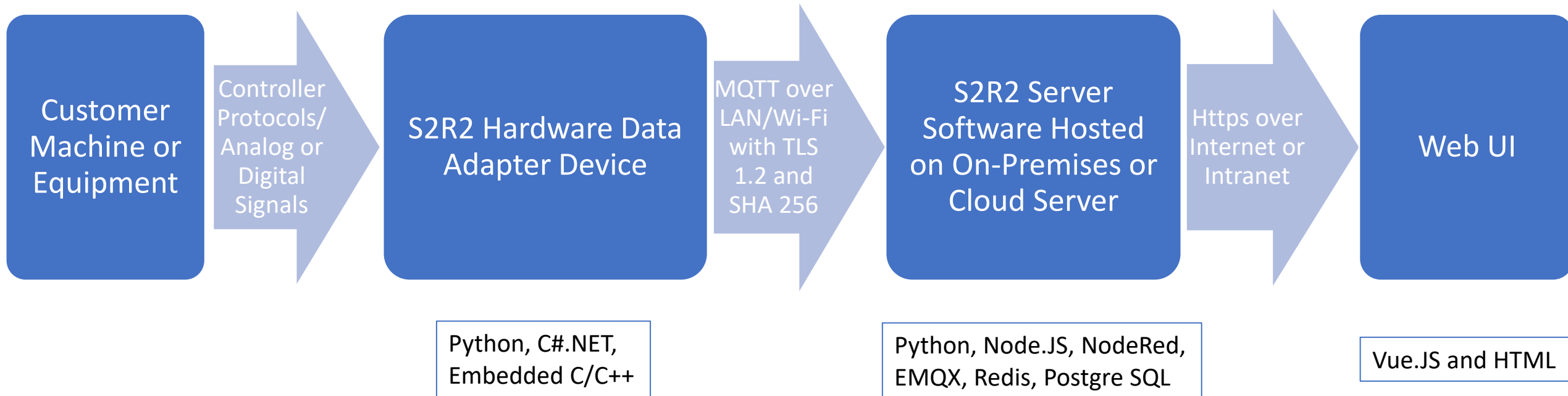
- BE Mechanical from MIT, Pune
- 32+ years of experience in Business Development, Enterprise sales, Key Account Management
- Ex GÜDEL India (GM Sales), Atlas Copco (Business Line Manager P&L responsibility), Crompton Greaves
- Excellent network with Automobile industry, Tier-1 component manufacturers, Tractor industry, Off road industry, Line builders, Heavy engine & genset manufacturers, etc.



# **Production Monitoring System**

Technology Overview





# Thank You!



**S2R2 Technologies Pvt. Ltd.**  
S.No.18, FMC III, Karve Nagar  
Pune 411 052 , Maharashtra, INDIA

[sales@s2r2tech.com](mailto:sales@s2r2tech.com)  
+91 77740 95383